

Annual Report

2017-18

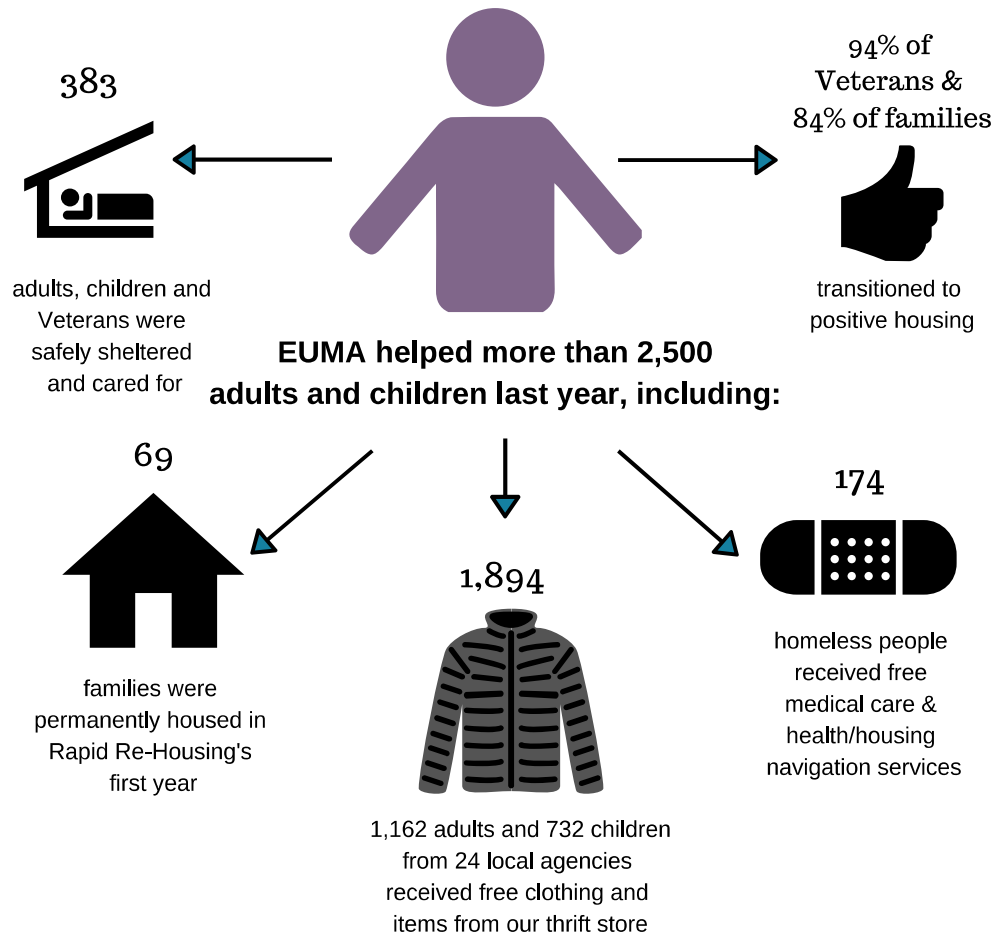


Mission Statement

Rooted in God's love and care, EUMA provides life-changing opportunities for those who live at the margins of homelessness to become vital members of our communities.

You help us carry out our mission each day by the way you pray, give and engage.

Because of you:



Your EUMA Ministries:

The Refuge - emergency shelter for homeless families with children

Liberty House - transitional shelter for homeless Veteran men

Rapid Re-Housing - program helping individuals and families find a home and stay there

Healthcare for the Homeless Partnerships - healthcare ministry to the homeless community

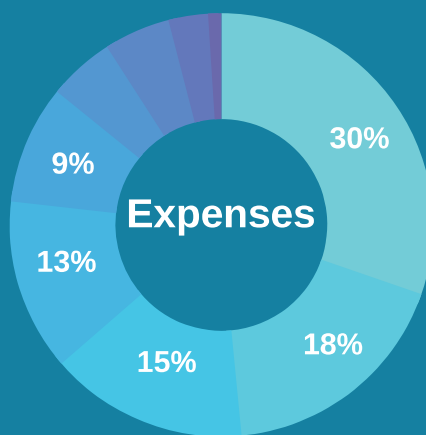
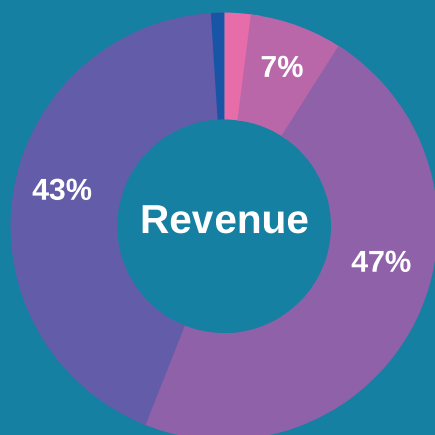
Our Neighbors' Place Overflow Shelter - seasonal shelter ministry with local churches

Permanent Housing - providing 8 low-income housing units to those who were homeless

Rainbow Connection Thrift Store - providing free clothing and household items to those in need



Fiscal Year In Review



Non-cash income included: \$194,600 in donated goods, and \$94,046 in donated professional services.

Revenue

Grants	\$489,413
Gifts and Events	\$446,283
Rainbow Connection	\$74,787
Rental Income	\$23,005
Misc.	\$8,858

Expenses

Rapid Re-housing	\$333,110
Liberty House	\$199,362
The Refuge	\$168,061
Administration	\$142,978
Fundraising	\$103,251
Rainbow Connection	\$59,757
Rental properties	\$50,976
Capital improvements	\$31,765
Healthcare for the Homeless	\$11,974



6,695 hours
of volunteer hours were donated



28 EUMA Staff
15 full time; 13 part time

EUMA Board of Directors

Rev. Tom Hoeke President	Diana Ames Lisa Babo Ann DiTullio Kathy Fisher
Darlene Elsesser Kovacs Vice President	Rev. Pamela Gardner Rev. Keith McGarvey Debora Radder, MD James Renshaw Rev. Sarah Daniels Roncolato
Ronald E. Holl Secretary	Dennis Scalise Edwin Smith Rev. Dennis Swineford
Ann Marie Ernst Treasurer	

EUMA Leadership

Amanda Alberico Housing Specialist	Kate Hiles Development Director
Lee Ann Arble Office Manager	Becky Kitelinger Rainbow Connection Mgr
Chas Blose Housing Specialist	Barb Lewis, RN, FCN HC4HP Coordinator
Kurt B. Crays, MDiv., CFRM Executive Director	Lori Lewis Dir. of Finance and Admin.
Stephen Durant, FPS, CRS Liberty House Supervisor	Missy Niedzielski Director of Housing
Margueritta Estes Development Officer	Don Perry Facilities Mgr.

Erie United Methodist Alliance, Inc.

1033 E. 26th St., Erie, PA 16504
814-456-8073

www.euma-erie.org info@euma-erie.org

EUMA is a non-profit 501(c)(3) charitable organization.
Data reflects fiscal year July 1, 2017 to June 30, 2018.